

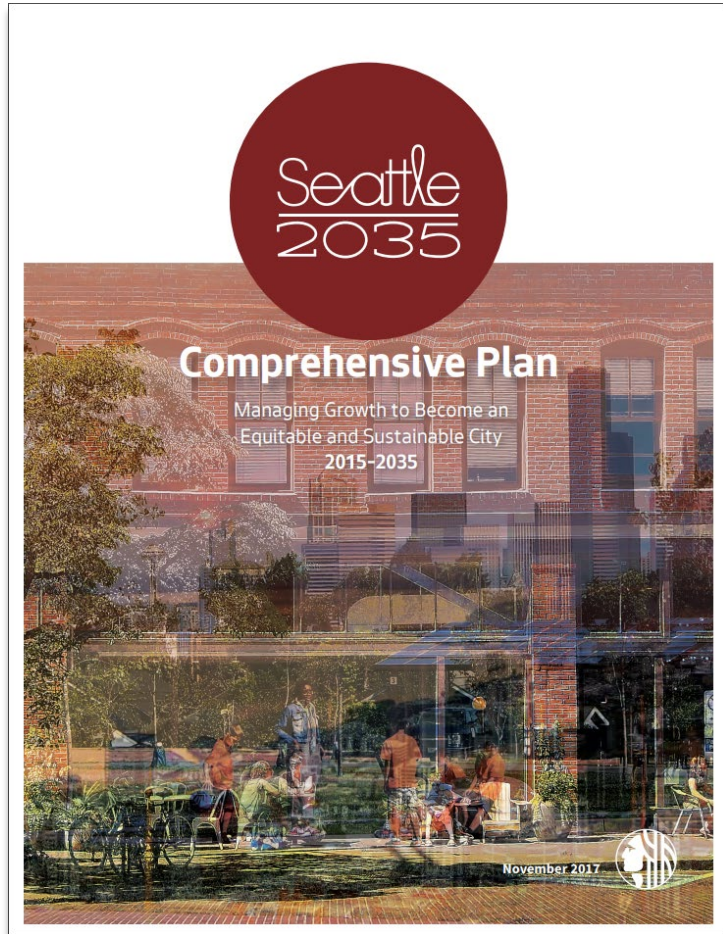
Racial Equity Analysis

Seattle 2035 Comprehensive Plan and Urban Village Growth Strategy

Update and Discussion

Michael Hubner and TBD
Office of Planning and Community Development

Step 1 toward Comprehensive Plan Update



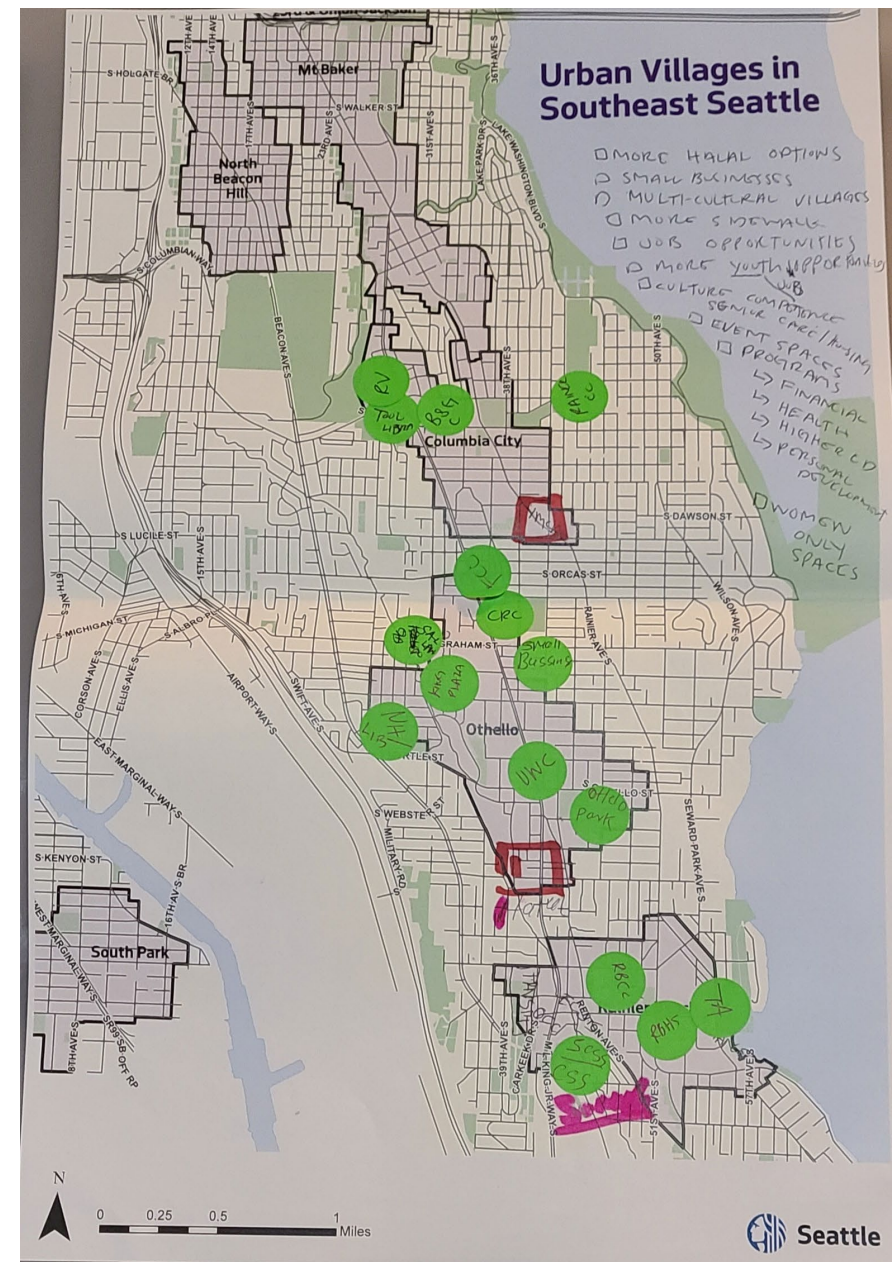
- Racial Equity Analysis of Seattle 2035
- Focus on the Urban Village growth strategy
- Identify areas for improvement in policy and implementation
- Plan for meaningful engagement with BIPOC communities

Approach to Racial Equity Analysis

- Interdepartmental effort (OPCD, DON, OCR)
- Revisit comp plan equity issues with PolicyLink
- Lead with community stakeholder engagement
- Identify critical questions and issues
- Inform approach to
 - Data and analysis
 - Racial Equity Toolkit process
 - Growth strategy alternatives

Focus groups

- Total of four
- Participants representing many different communities
- Facilitation by SouthCORE / PS Sage and Community Liaisons with DON
- Questions on visioning, growth and development, community assets and needs
- What we've heard so far



*Thursday, October 29
4 pm to 6:30 pm
Virtual Convening*

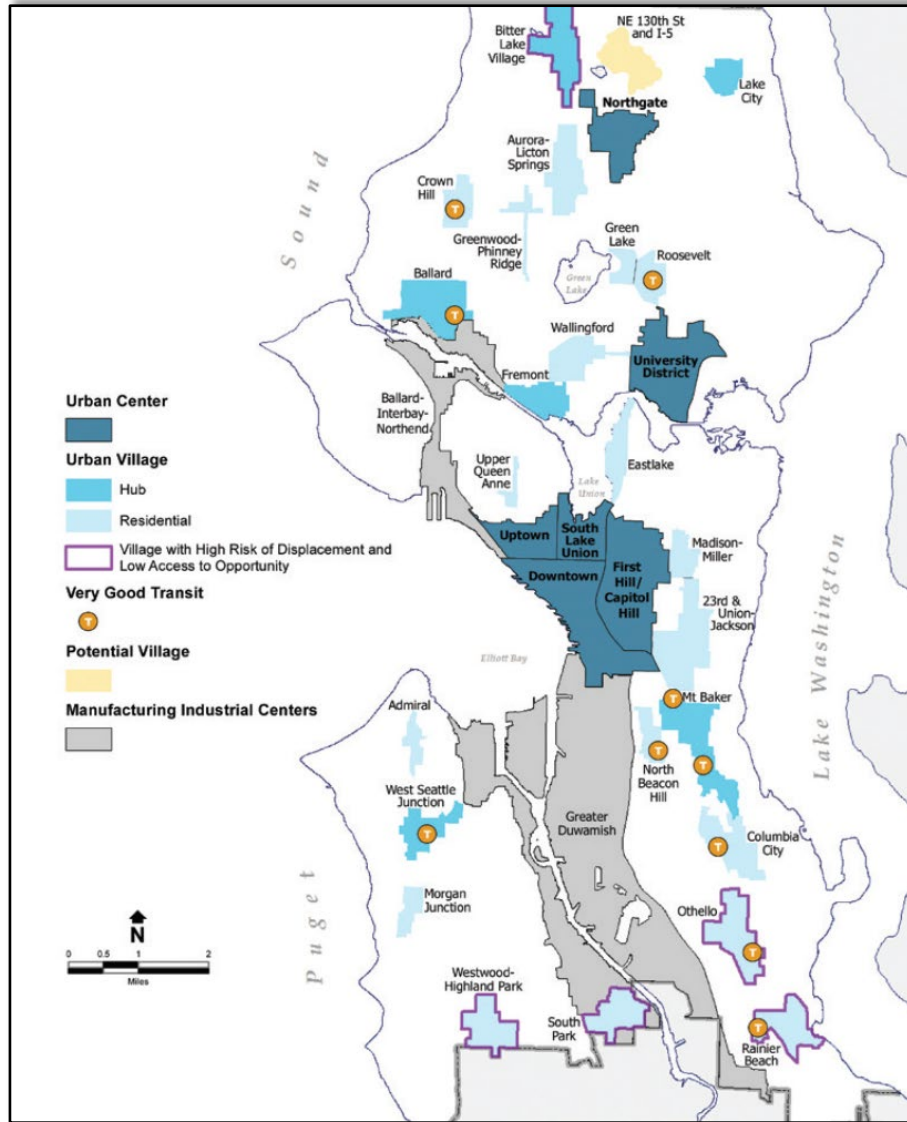
Racial Equity Analysis Workshop

- Planned and facilitated with PolicyLink
- Anticipate 75+ participants
 - Focus group participants
 - EDI grantees and other orgs
 - Boards and commissions
 - City staff
- Small work groups
- Explore critical questions about Seattle 2035 and a Comp Plan update centered on a racially equitable growth strategy

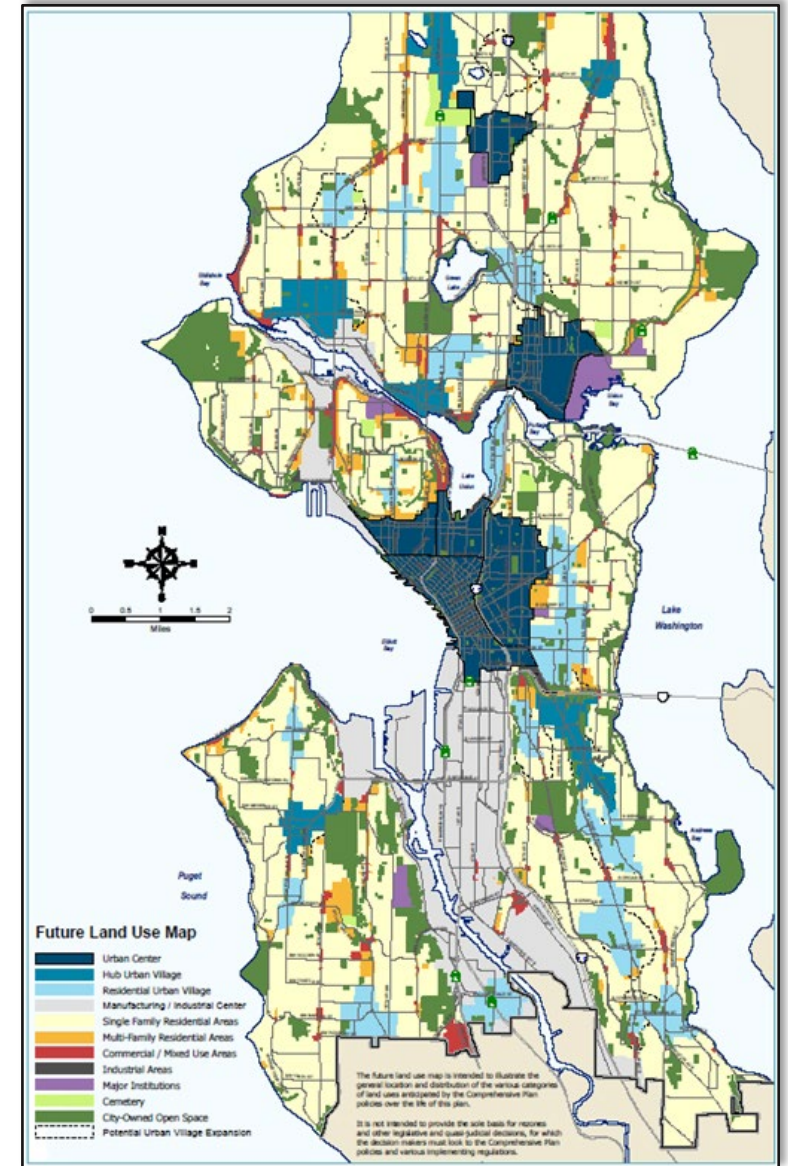
Available in early 2021

- Final report from PolicyLink
- Results from community engagement and Workshop
- Recommendations on next steps as we launch Comprehensive Plan update in 2021

Urban Centers and Villages



Future Land Use Map

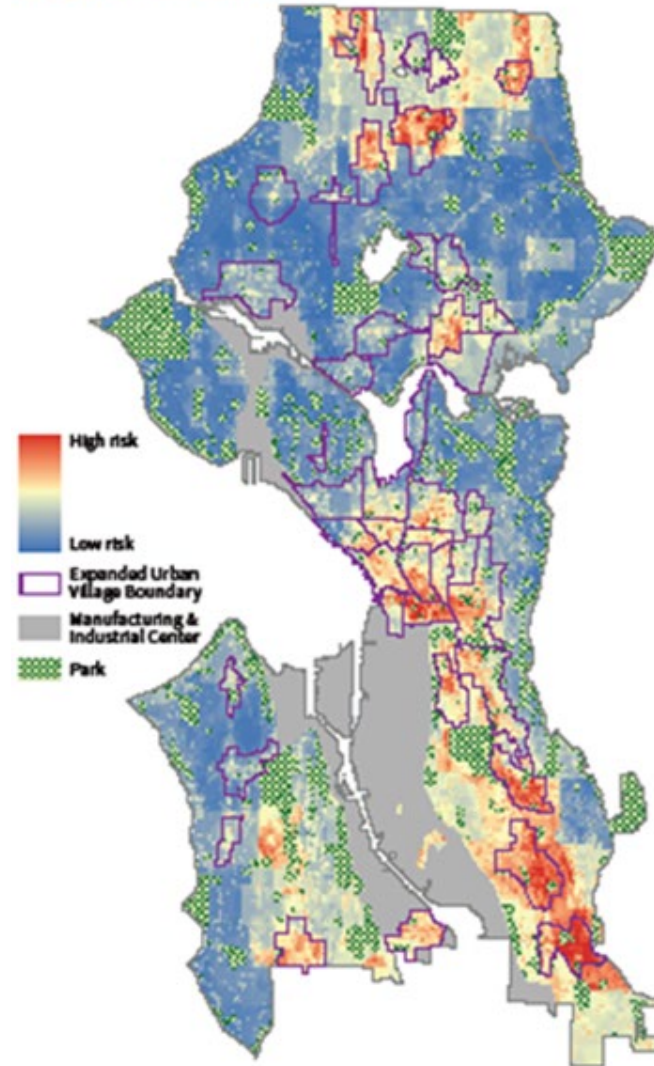


Seattle 2035 Land use and growth strategy

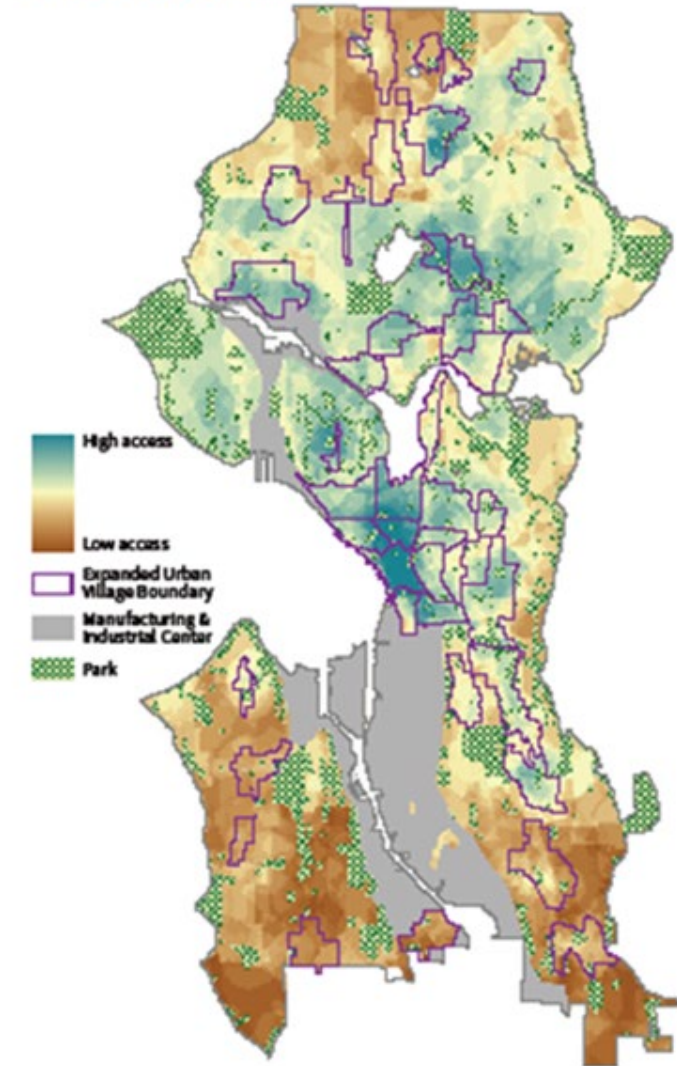
Race and equity in Seattle 2035

- 3 Equitable Development Public Events
- Equity Workshop for Staff
- Data points illustrate inequities
- 100+ policies addressed race and social equity
- Growth and equity analysis of displacement and opportunity
- Adjusted growth strategy

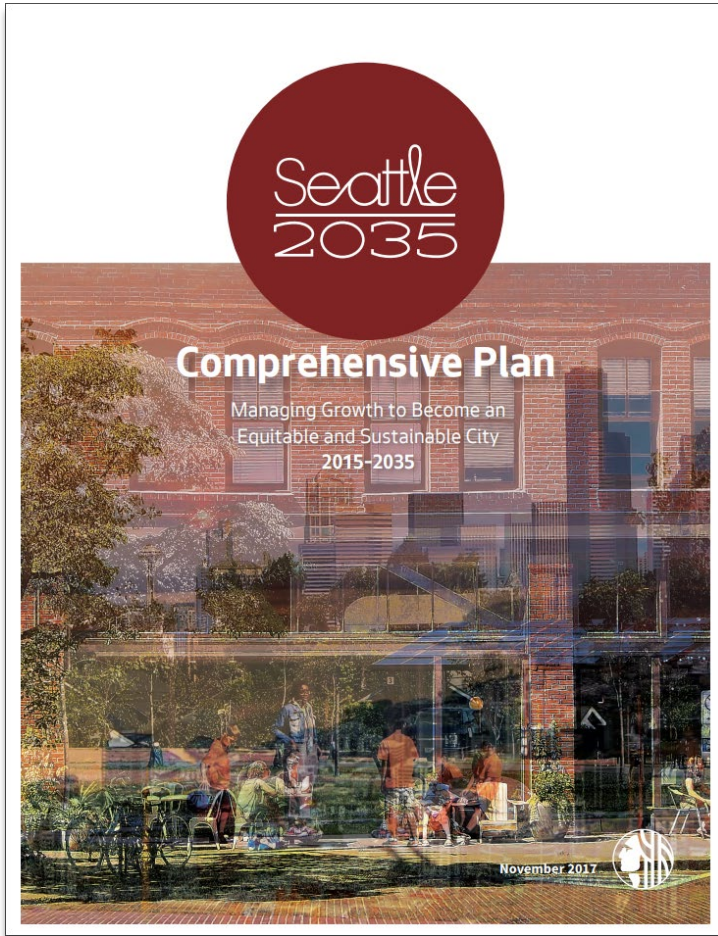
Displacement Risk Index



Access to Opportunity Index



Since 2016 adoption of Seattle 2035



New Tools

- EDI
- MHA
- ADU/DADU



GROWTH!

- Jobs
- Housing costs
- Displacement



Emergent Challenges

- COVID-19
- BLM

Critical Questions for a Racial Equity Analysis

Questions for the Planning Commission

- What unfinished work on race and equity from Seattle 2035 should we be focusing on in the next Comprehensive Plan?
- How can this plan update advance racial equity?
- In particular, toward a racially equitable COVID-19 recovery?

Questions for the Planning Commission

- What are the benefits of the Urban Village strategy and are they equitably distributed?
- How has the Urban Village strategy impacted BIPOC communities?

Questions for the Planning Commission

- What principles and outcomes should guide development of a racially equitable growth strategy?
- How can the City provide for meaningful community engagement around a more equitable comprehensive plan and growth strategy?

Questions for the Planning Commission

- Are there critical questions you would like to see addressed through data analysis?
- Are there additional critical questions you would like to see explored? In the ...
 - October 29 workshop?
 - PolicyLink report?
 - Plan update itself?